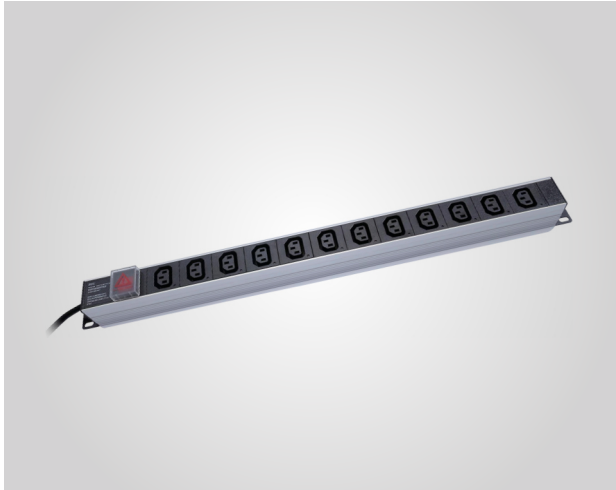


# POWER DISTRIBUTION UNITS



LDU12-H1-V1U-B-2.0-10A

Version: 03/20



8 safety outlets

1U Aluminum

Schuko plug

19" rack mount

## FEATURES

- PDUs are 482.6mm (19") standard cabinet & nonstandard cabinet compliant
- Modularized and multifunctional power distribution units
- Designed and developed according to international standards
- The series has several invention patents and are comprised of many standards of power socket modules: controll module, protecting module, surge protector module, channel surge protector module, digital AC ampere-meter module, etc.

Part Number	LDU12-H1-V1U-B-2.0-10A
Input plug	DIN49440 16A250VAC
Cable Spec	3x1.5mm <sup>2</sup> x 2M
Output unit	12xIEC320 C13 10A
Rated input voltage	110/220VAC 50/60Hz
Maxload current	10A
Product size	483x44.4x44.4mm 19" 1U
Cover material	Aluminum alloy
Cover color	Silver

## ORDER INFORMATION

DESCRIPTION	Inner Box	Carton	Carton measurement (L*W*H)	Weight
LDU12-H1-V1U-B-2.0-10A	1 PCS	10 PCS	53.5cm× 31.3cm × 23.4cm	10.7KG

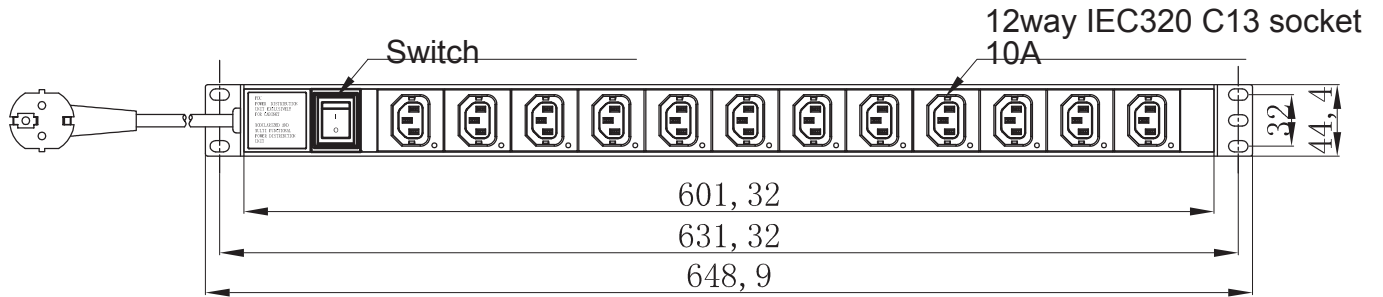
# POWER DISTRIBUTION UNITS



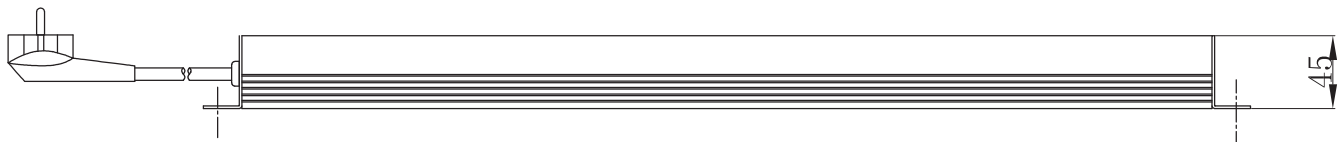
LDU12-H1-V1U-B-2.0-10A

Version: 03/20

## TECHNICAL DRAWINGS



3x1.5mm<sup>2</sup> European plug (DIN49441)16A,  
length 2m.



**keep stable**