

WALL CABINETS



DW07-66

Version: 03/20



Loading capacity 60 kg

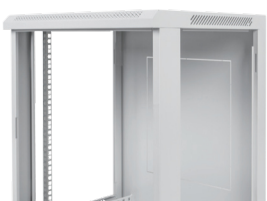
Rugged construction

Pre-assembled

Various options of accessories

FEATURES

- Size: 600*600
- Capacity: 7U
- Color: Grey / Black
- Load capacity: 60 kg
- Tempered glass front door provides good visibility for observation
- Easy removeable side and front door
- Cable entry access options form top of cabinet
- Safety class rating IP20



Rugged construction



Good visibility



Convenient disassembly



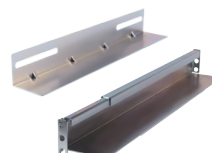
Convenient cable entry



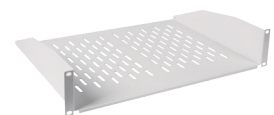
2 Way fan tray



Mounting bracket



L mounting angle



Cantilever shelf

STANDARD

Comply with ANSI/EIA RS-310-D, DIN41491; PART1, IEC297-2, DIN41494; PART7, GB/T3047.2-92 standard.

Compatible with metric ETSI and 19inch international standard.

APPLICATION

Widely used in network system, educational system, broadcasting system and telecommunication system.

Suitable for placing server, computer and precision electronic equipments.

MATERIALS

Cool rolled steel

Thickness: mounting rail: 1.2mm

Else in 0.8mm

Tempered smoky-gray glass with thickness of 5mm

ORDER INFORMATION

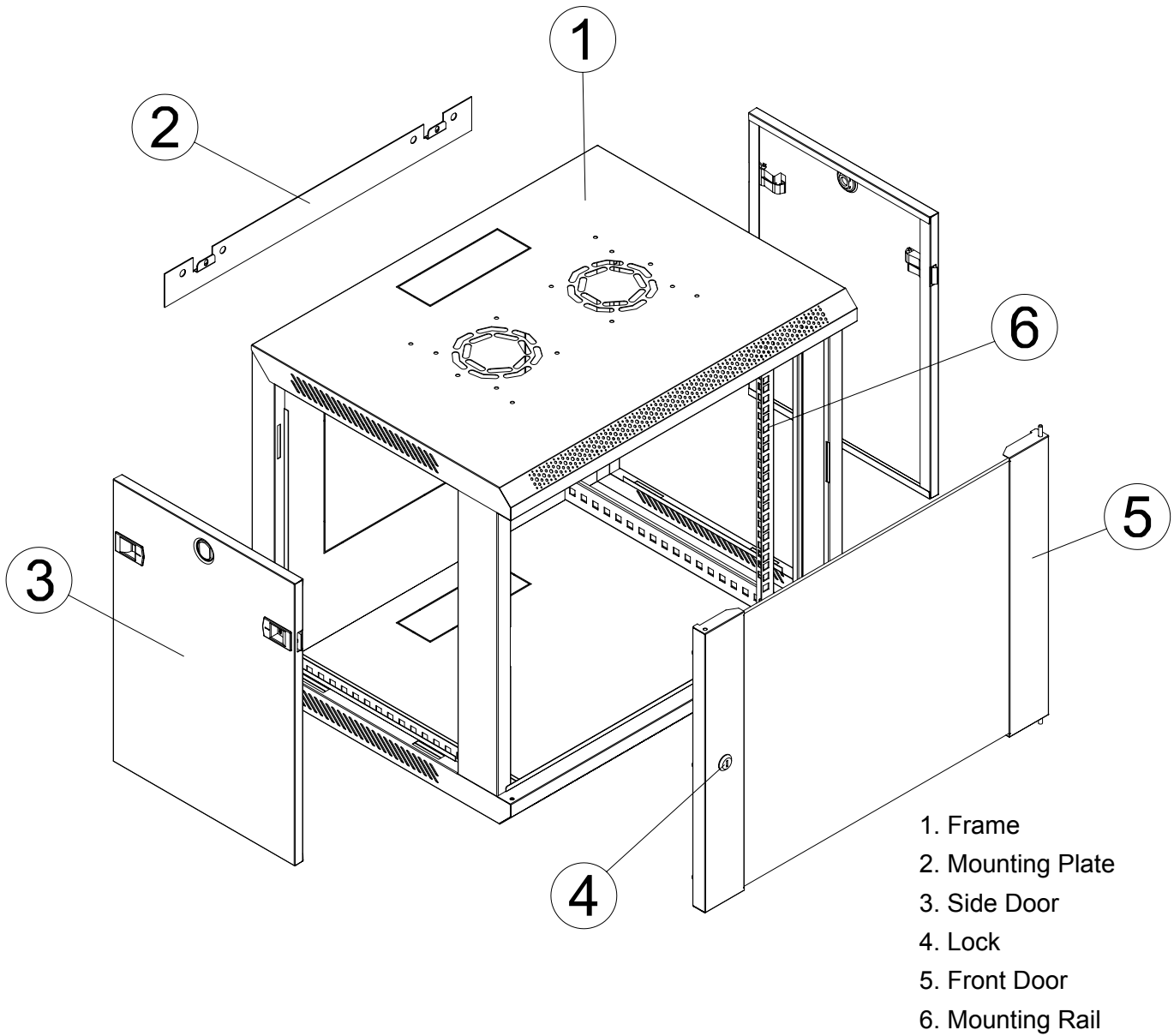
Capacity (U)	WIDTH (mm)	DEPTH (mm)	PARTNUMBER	CARTON MEASUREMEN W×D×H(mm)	VOLUME (CBM)	Net weight (KG)
7U	600	600	DW07-66-■	620*620*451	0.18	19

* Please contact us for customized requirement

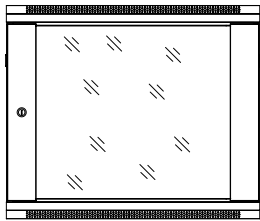
COLOR

■■■■■■■ - 1- E	
A=Black(RAL9005)	■■■■■
■■■■■■■ - 2- E	
B=Gray(RAL7035)	■■■■■

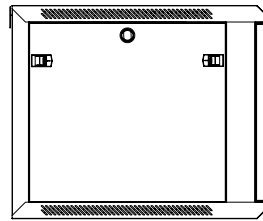
TECHNICAL DRAWINGS



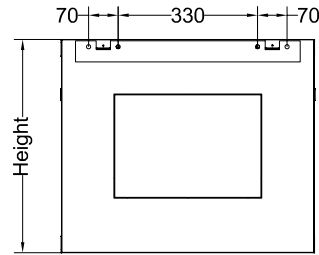
TECHNICAL DRAWINGS



FRONT VIEW



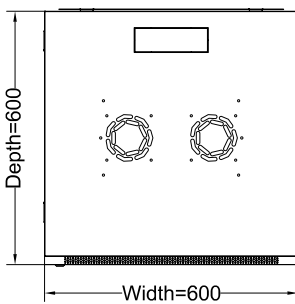
LEFT VIEW



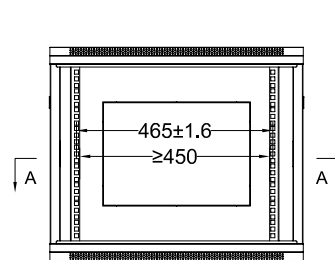
BACK VIEW

Mounting hole height distance" (Hd")

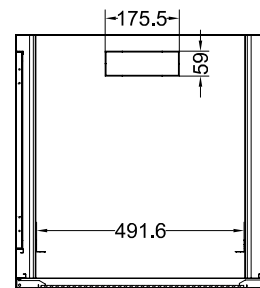
U	Hd
7	260 mm
9	349 mm
12	482 mm
16	660 mm



VERTICAL VIEW



FRONT VIEW (GLASS EXCLUDING FRONT DOOR)



SECTION PLANE A-A

keep stable