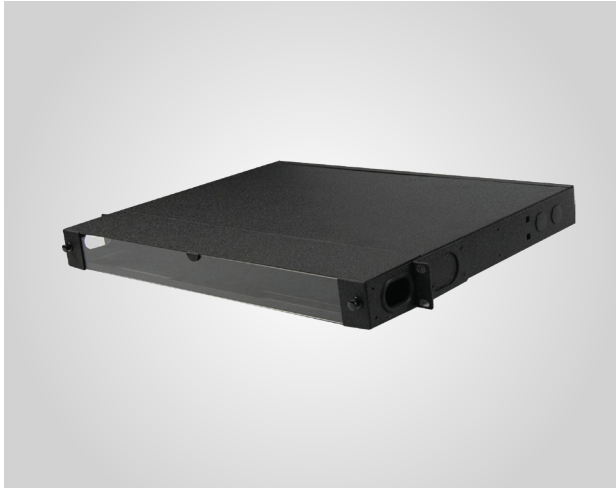


MPO-1UFIBER OPTICAL PATCH PANEL



LFPM01-4-A

Version: 03 /20



Color: Black

19-inch equipment

DESCRIPTION

MPO Fiber optical patch panel, is used for data center MDA, IDA or HAD distribution area fiber trunk connection and wiring management, and suitable for 19-inch rack and cabinet. It can be installed pre-connected MPO adapter module or MPO adapter front panel.

FEATURES

- Size: 525 x 435 x 110 mm
- MPO 1U fiber optic distribution box can install 4 MPO pre-terminated boxes, termination box install duplex LC adapter can manage up to 96 cores, and the termination box installs simplex SC adapters can manage up to 48 fiber cores Core, such as installed MPO adapter board maximum manageable fiber cores up to 288 cores
- Made of high quality cold rolled steel plate
- After the plate has passed strict degreasing, pickling, rust-proof phosphating, and pure water cleaning, it is electrostatically sprayed. The thickness of spray is 80um-100um, which is in line with
- European ROHS environmental protection standards
- Includes 1U cable management
- Fiber distribution frame design includes cable management arm and label strip
- Patch panel is easy to install, convenient management and other advantages
- It is more than four times the density of the traditional fusion fiber distribution frame, which greatly saves the space of the cabinet, improves the utilization of the cabinet, and creates value for the construction of the data center
- Adopt modularized structure to upgrade and maintain conveniently

MPO-1U FIBER OPTICAL PATCH PANEL



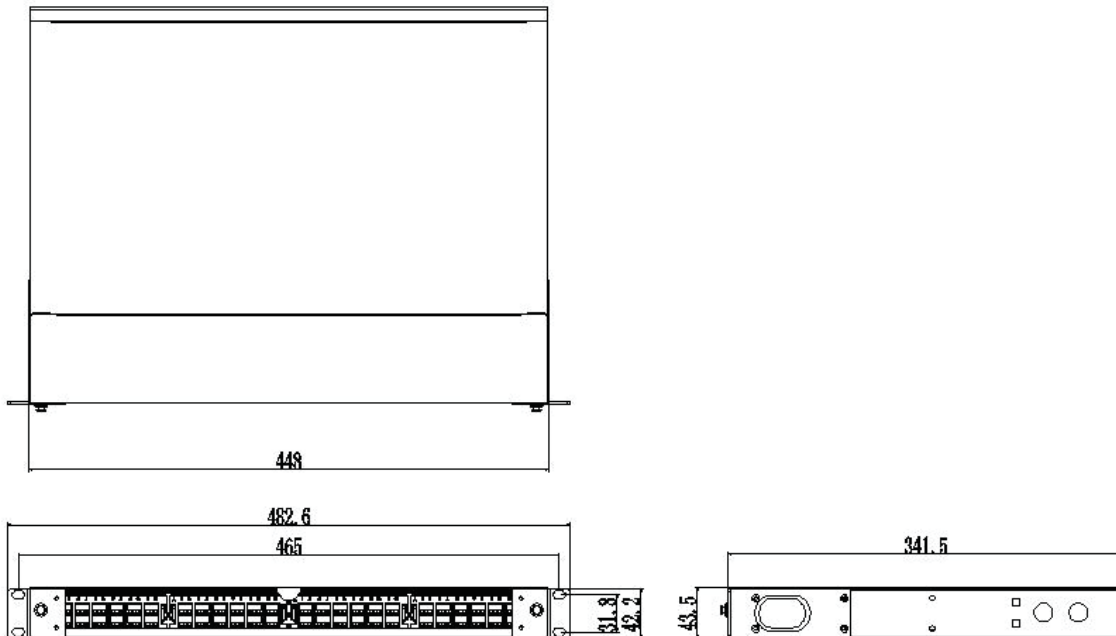
LFPM01-4-A

Version: 03/20

ORDER INFORMATION

	NUMBER (pcs)	WEIGHT (kg)	DEPTH (cm)	WIDTH (cm)	HEIGHT (cm)	PART. NO
Package (1 Carton)	1	4.5	52.5	43.5	11.0	LFPM01-4-A

TECHNICAL DRAWINGS



keep stable