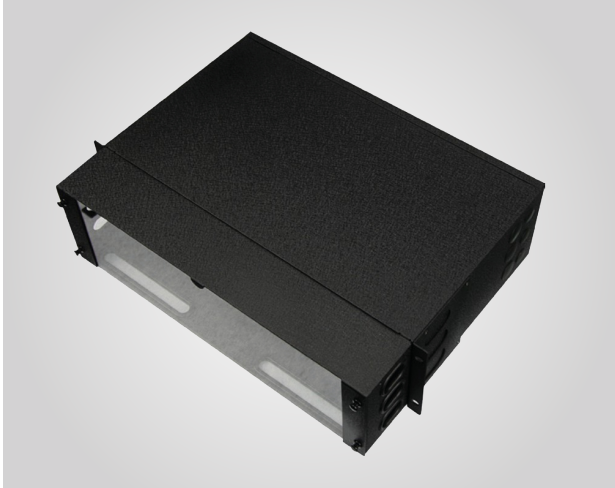


MPO-3UFIBER OPTICAL PATCH PANEL



LFPM03-12-A

Version: 03/20



Color: Black

19-inch equipment

DESCRIPTION

MPO Fiber optical patch panel, is used for data center MDA, IDA or HAD distribution area fiber trunk connection and wiring management, and suitable for 19-inch rack and cabinet. It can be installed pre-connected MPO adapter module or MPO adapter front panel.

FEATURES

- Size: 525 x 435 x 188 mm
- MPO 3U fiber optic distribution box can install 12MPO pre-terminated boxes, termination box install duplex LC adapter can manage up to 288 cores, and the termination box installs simplex SC adapters can manage up to 144 fiber cores Core, such as installed MPO adapter board maximum manageable fiber cores up to 864 cores
- Made of high quality cold rolled steel plate
- After the plate has passed strict degreasing, pickling, rust-proof phosphating, and pure water cleaning, it is electrostatically sprayed. The thickness of spray is 80um-100um, which is in line with European ROHS environmental protection standards
- Includes 3U cable management
- Fiber distribution frame design includes cable management arm and label strip
- Patch panel is easy to install, convenient management and other advantages It is more than four times the density of the traditional fusion fiber distribution frame, which greatly saves the space of the cabinet, improves the utilization of the cabinet, and creates value for the construction of the data center
- Adopt modularized structure to upgrade and maintain conveniently.

MPO-3UFIBER OPTICAL PATCH PANEL



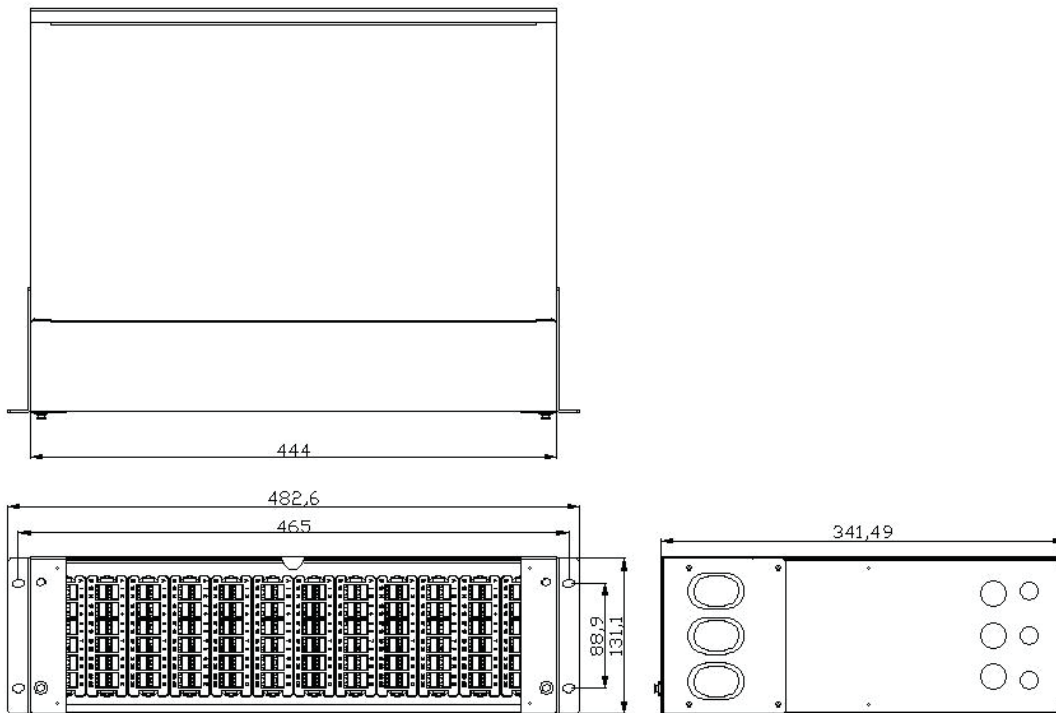
LFPM03-12-A

Version: 03/20

ORDER INFORMATION

	NUMBER (pcs)	WEIGHT (kg)	DEPTH (cm)	WIDTH (cm)	HEIGHT (cm)	PART. NO
Package (1 Carton)	1	7	52.5	43.5	18.8	LFPM03-12-A

TECHNICAL DRAWINGS



keep stable